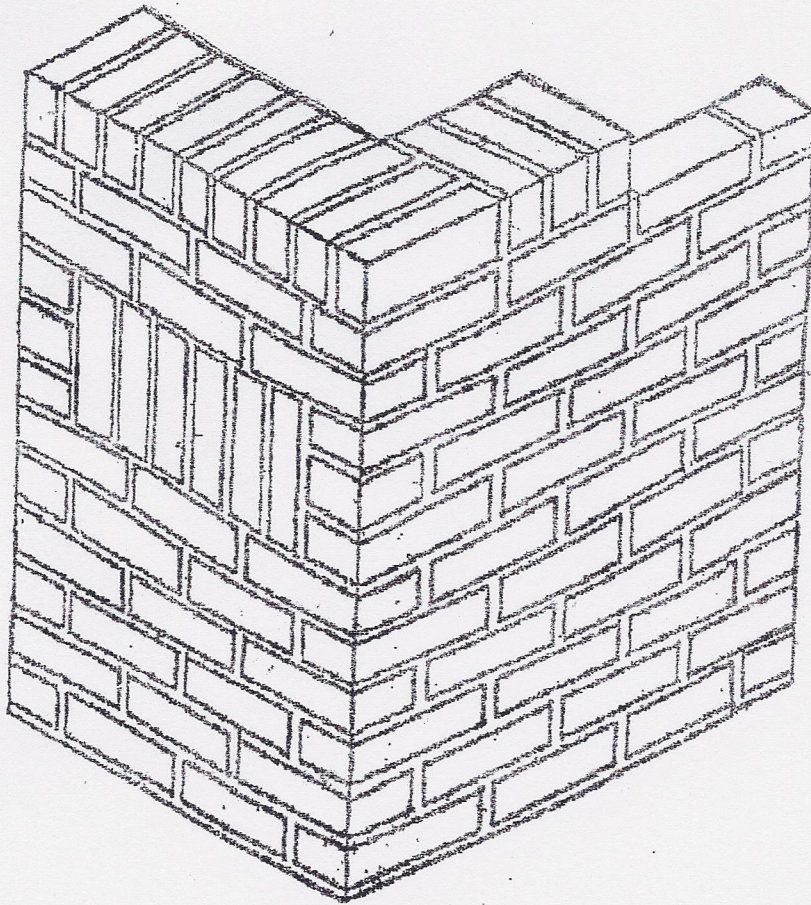


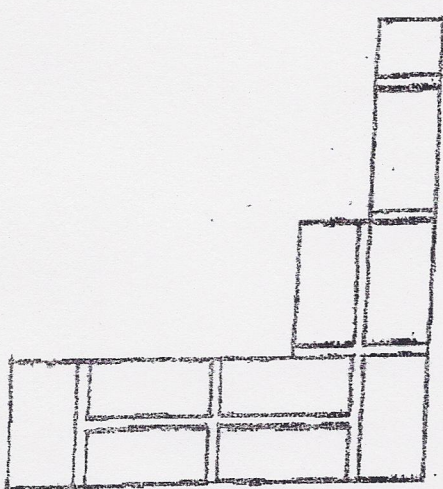
# 8" Brick Corner With 8" Jamb, 4" Jamb, Soldiers & Rowlock



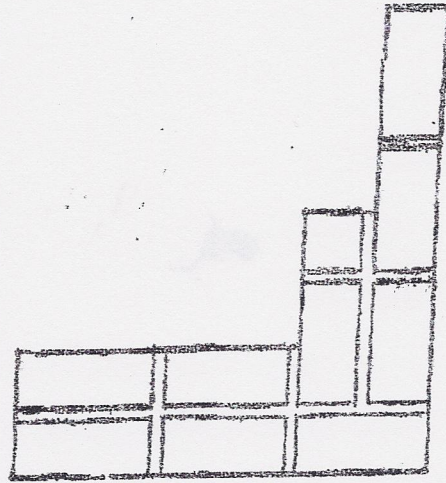
The face (shown at left) the  
jamb (end of wall) and the top  
of project shall be concave tooled.  
Back side to be flush cut

Bricks will be laid to a height of 3  
courses to 8" (#6 on the modular rule)

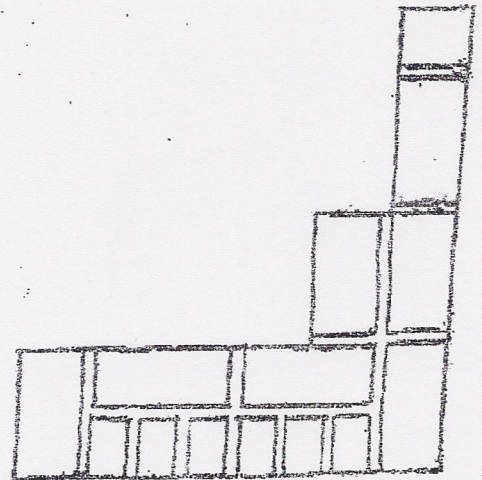
Head joints to be uniform with bed joints.



First Course



Second Course



Seventh Course